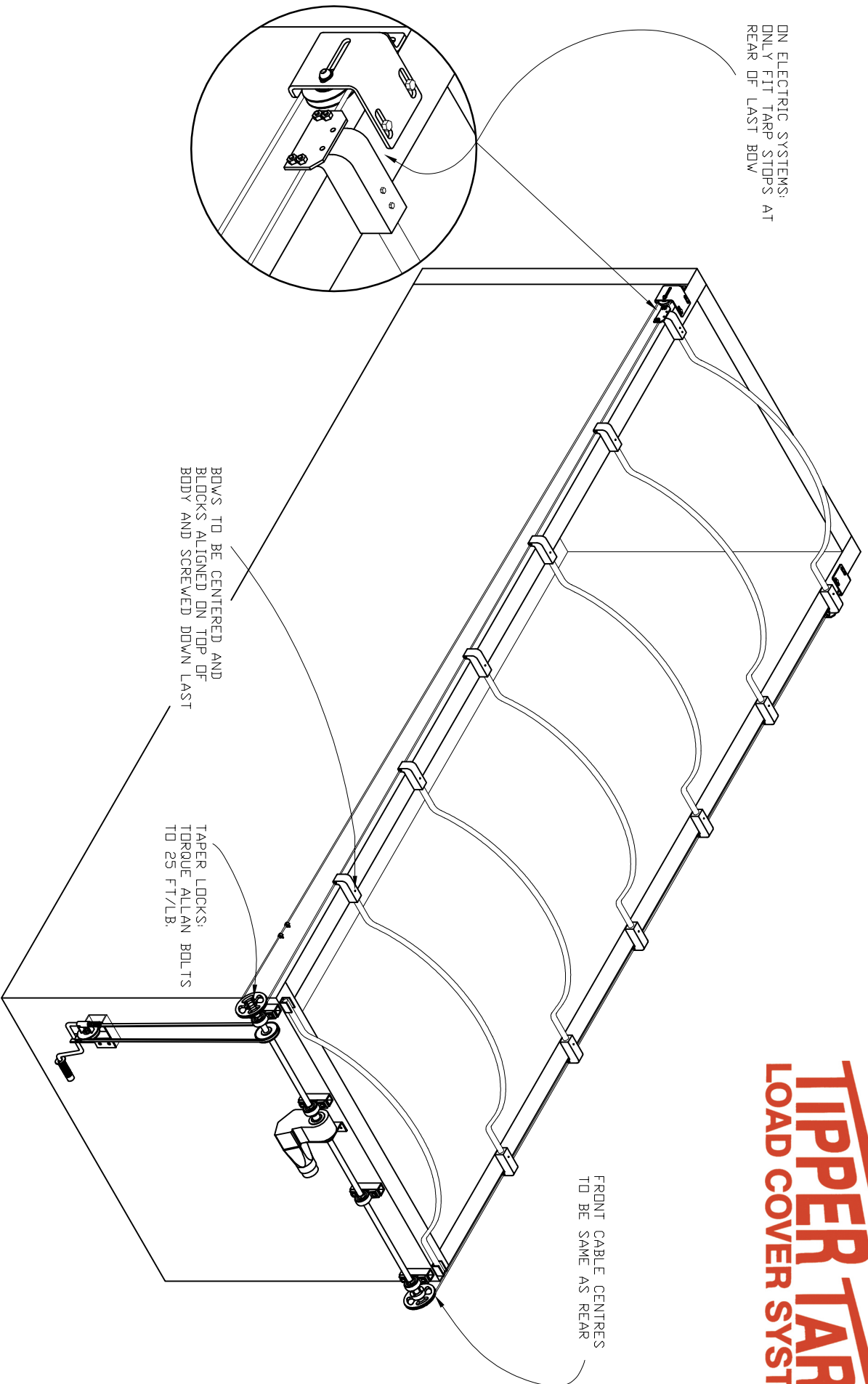


ON ELECTRIC SYSTEMS:  
ONLY FIT TARP STOPS AT  
REAR OF LAST BOW



BOWS TO BE CENTERED AND  
BLOCKS ALIGNED ON TOP OF  
BODY AND SCREWED DOWN LAST

TAPER LOCKS:  
TORQUE ALLAN BOLTS  
TO 25 FT/LB.

FRONT CABLE CENTRES  
TO BE SAME AS REAR

**TIPPER TARPS**  
LOAD COVER SYSTEMS